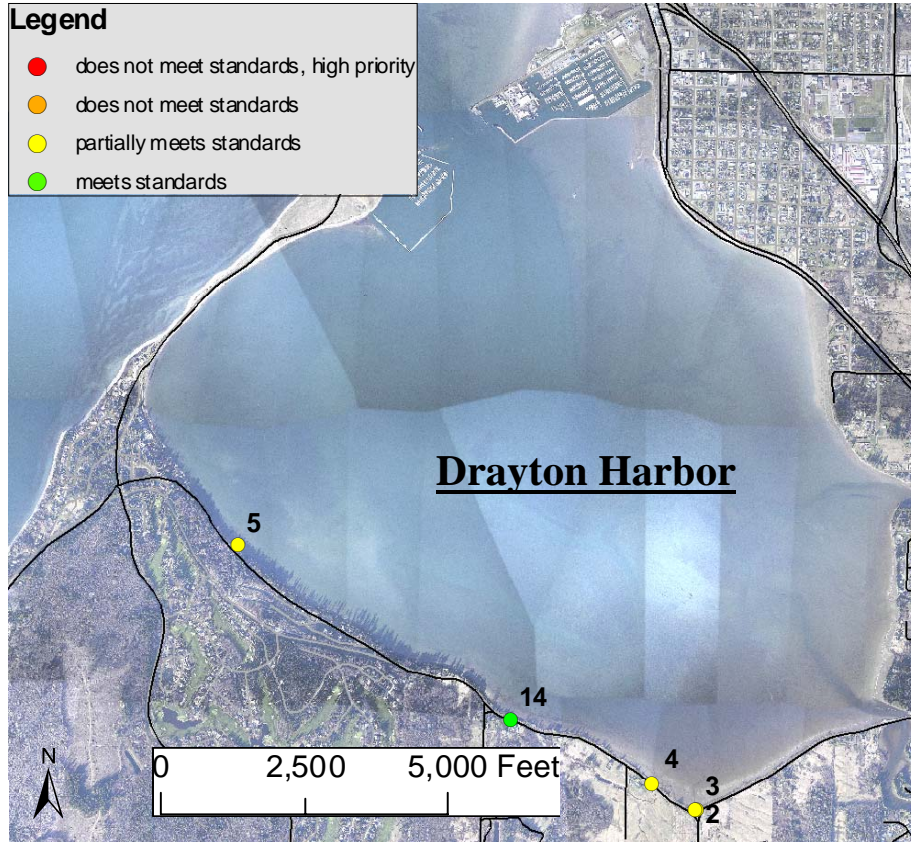


## Appendix C

### Drayton Harbor Water Quality Monitoring Summary

Water Quality Status 6/22/06-12/4/07



*Data are for general information only. The sample size is too small to produce statistically significant conclusions.*

Site	Number of samples	GeoMean	Minimum	Maximum	% > 200	Status
DH2	12	13	1	740	17	●
DH3	11	137	25	4700	27	●
DH4	3	6	1	201	33	●
DH5	9	47	9	1010	11	●
DH14	11	56	7	250	9	●

Note: Sites DH2 and DH3 locations do not show up well on this map. DH2 is approximately 20 east of DH3. These sites are outfalls located at the intersection of Harborview Road and Drayton Harbor Road.

#### Washington State Freshwater Fecal Coliform Standards for Drayton Harbor Watershed:

- Geometric mean <100 colonies/100mL
- No more than 10% of the samples > 200 colonies/100mL