

Quarterly Summary to Washington State Department of Health On-the-Ground Efforts in the Portage Bay Shellfish Protection District 1st Quarter of 2005

Efforts continue in the Portage Bay Shellfish Protection District to effect change in the water quality over the shellfish beds and throughout the district as a whole. The following is a summarized list of activities that have occurred in the district over the first quarter of 2005.

Agricultural practices (Department of Agriculture)

LNMP Inspections

- 7- dairy farm inspections completed
- 20 – dairy farm follow up inspections (10 of the 20 inspections concern on-going enforcement action at one facility)
- 10 - dairy complaint investigations that include manure spill, early applications, excessive applications and insufficient buffers

LNMP Compliance

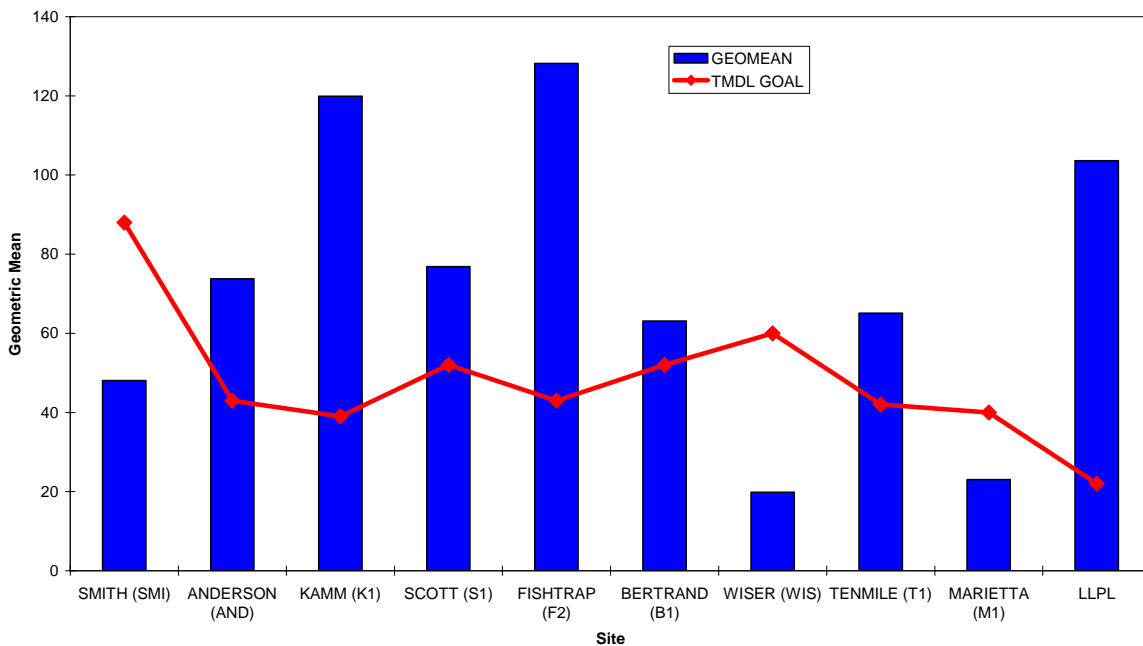
- 6 – letters of warning
- 1 – administration order
- 5 – facilities referred to Whatcom County CAO enforcement

On-site Septic Systems (Whatcom County Health Department)

- 11 – OSS loan inspections
- 2 – OSS complaint inspections. All complaints have been abated.

Water Quality Monitoring (Northwest Indian College)

- Water quality monitoring continues at 22 sites. Of the freshwater sites with a TMDL, only three are meeting their target geometric mean for fecal coliform.



OTHER PROJECTS/EVENTS IN 2005

Puget Sound Action Team

- PSAT released the 2004 State of the Sound report, available at: http://www.psat.wa.gov/Publications/StateSound2004/State_Sound_base.htm. This provides an overview of the results of PSAMP and other monitoring efforts in the Sound during the past two years and paints a picture of trends in water quality, habitat and species.
- Work continues on the third piece of the Shellfish/Urbanization study, which was presented at the 2004 Puget Sound/Georgia Basin Research Conference by Marina Alberti.

Mutt Mitt Program

- Since January 2005, 25 mutt mitt packs were used in the Portage Bay watershed, removing approximately 6.44×10^{11} (644,000,000,000) fecal coliform bacteria from reaching the waterways.